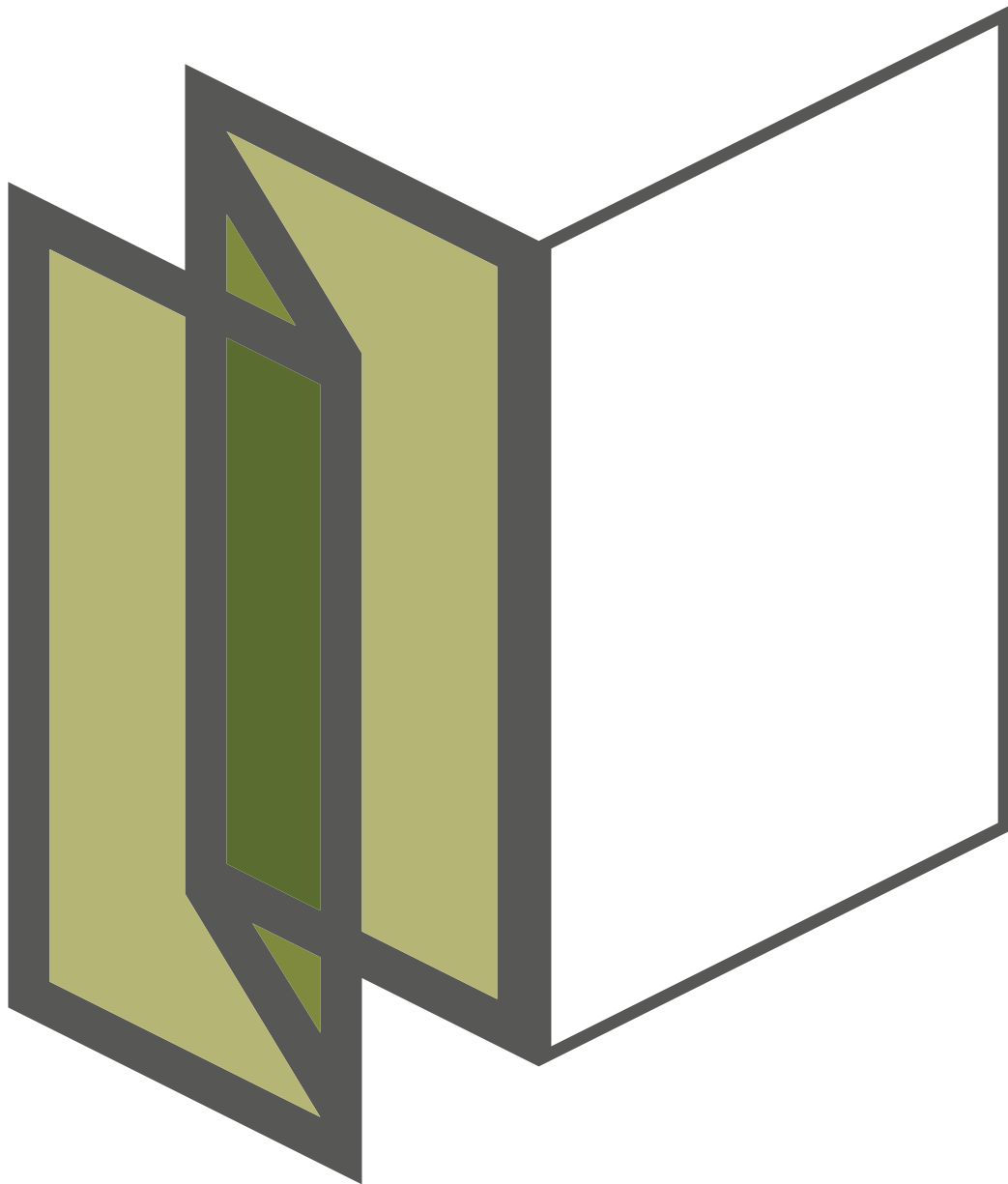
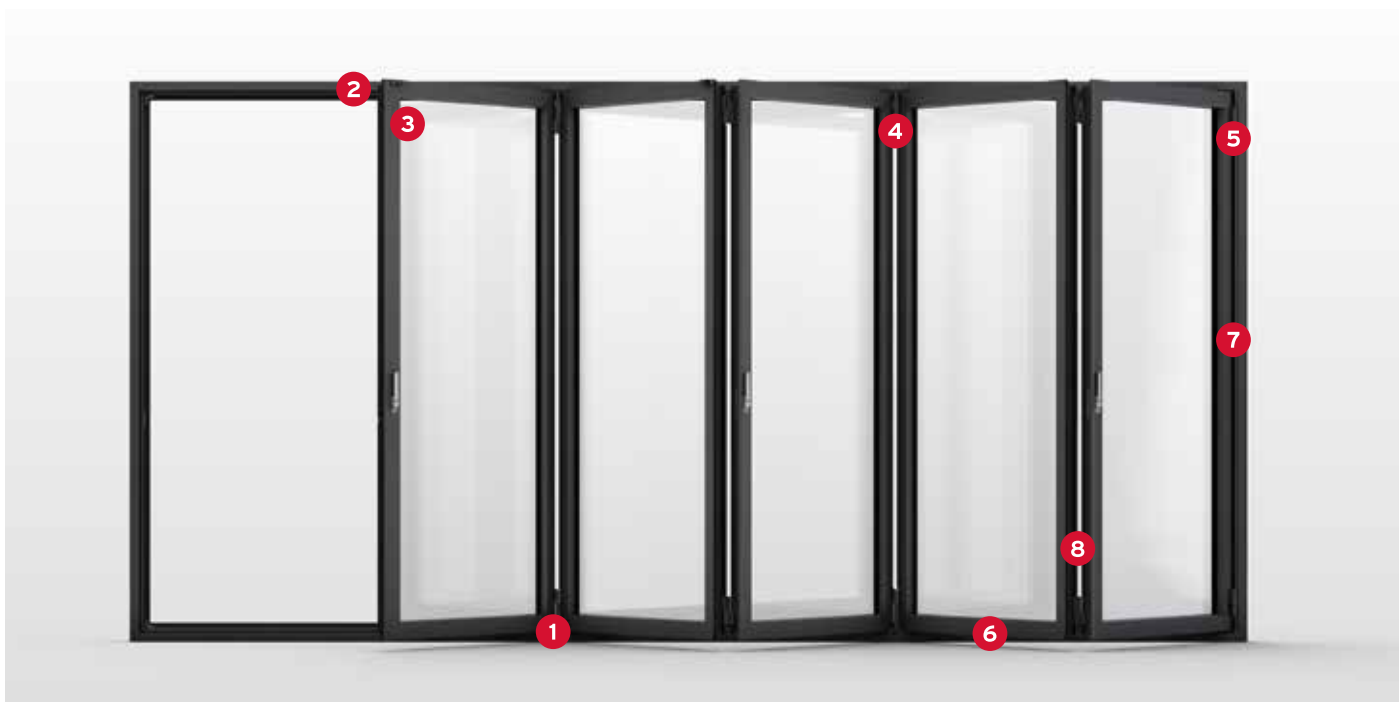


BI-FOLDING DOORS ECOLINE | HIGHLINE



BI-FOLDING DOORS

ECOLINE | HIGHLINE



1

RUNNER ASSEMBLY

- Stainless steel runner assembly with double-row deep-groove ball bearings
- Ease of operation, smooth running and quiet
- Optimum load transfer
- Wear-free and extremely low maintenance



2

LOCKING

- RC2 burglar protection optional
- 24 mm espagnolette throw at top and bottom of frame
- Optional linking to security system
- Concealed cable routing



3

"COMFORT SNAP" PANEL CATCHES

- Maximum user-friendliness for correct locking sequence
- Catch function allows controlled opening and closing of the panels





4

"EASY CLEAN" REMOVABLE HINGE PIN

- Easy cleaning even with high floor-to-ceiling dimensions
- New integral locking technology with error device
- Captive hinge pin which cannot drop out accidentally



6

3S TRACK GUARD

- High quality clip-on aluminium track guard
- Well-designed locking channel cover
- Additionally protects from ingress of dirt



5

ADJUSTMENT PROFILE

- Simple adjustment for panel tolerances
- Adjustment of panels from one single profile
- No break to seal



7

FRAME COVER

- Tasteful, flush cover of subframe fixing screw heads
- Concealed cable routing between bottom of profile and cover possible



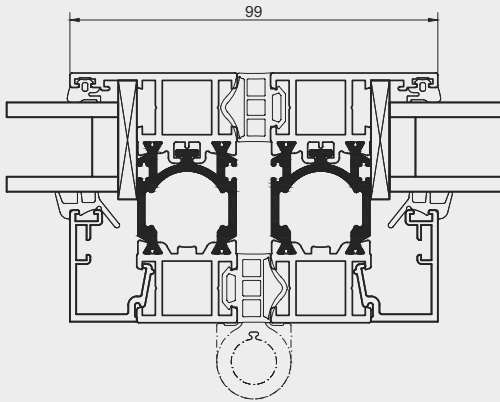
8

"TWINX" CONCEALED PANEL CENTRING MECHANISM

- Elegant slimline panel design throughout with even joints
- No break to sealing face
- Constant sealing pressure

BI-FOLDING DOORS ECOLINE | HIGHLINE

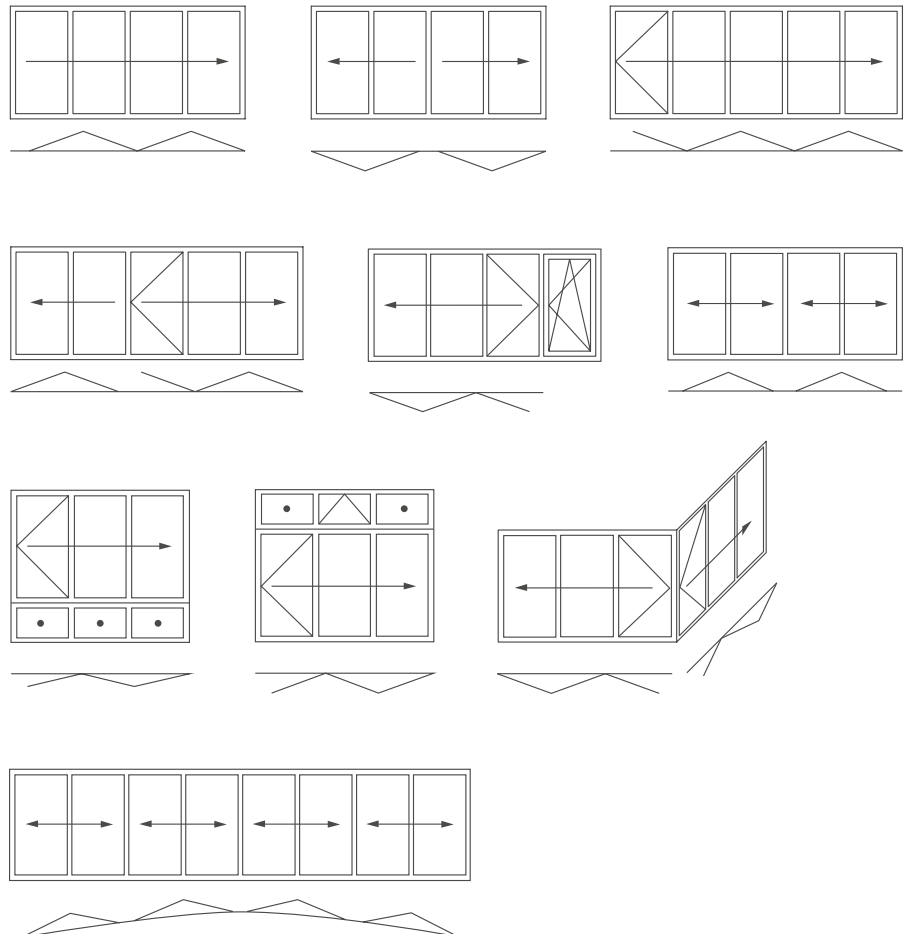
*The centre piece of the
bi-folding door system*



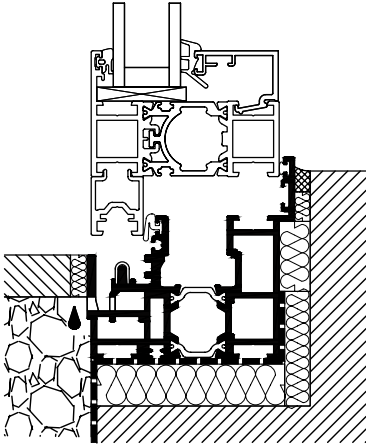
The new bi-folding door system is available in two versions: Ecoline and Highline. Despite their difference in unit thicknesses of 67 and 84 mm, the new bi-folding system with its 99 mm sight line offers an unusual elegant slender appearance throughout. What makes this possible is its centre piece: the

bionicTURTLE®, a multi-functional thermal-break which combines various design aspects. The design of this profile form provides the basis for the stability of the slender upright profiles. In addition, it accommodates provisions for locking mechanism as well as door furniture and guarantees perfect

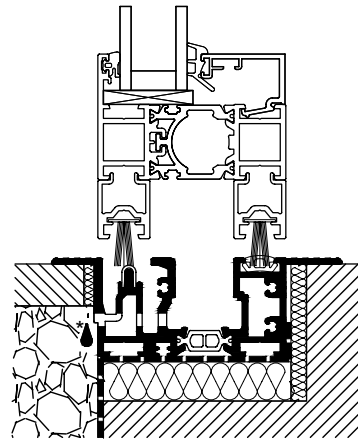
Configuration Examples



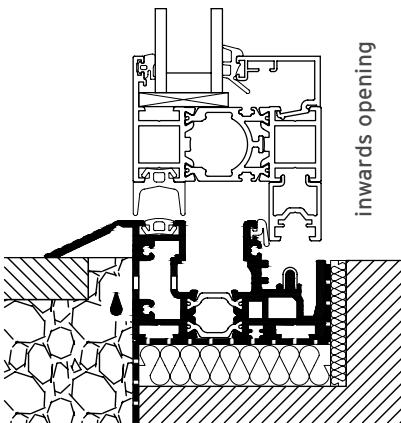
Floor Track Versions



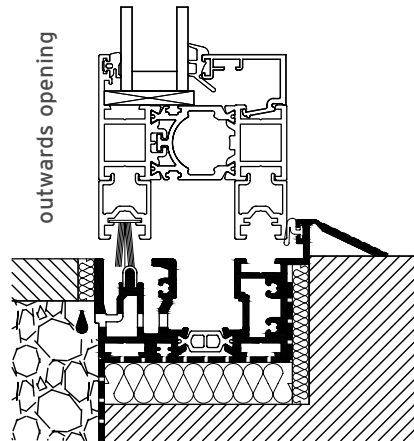
- floor track suitable for living accommodation
- with upstand



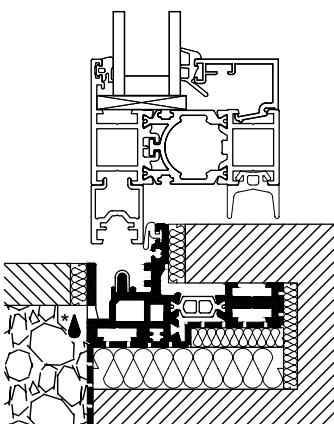
- recessed floor track
- without upstand for wheelchair access



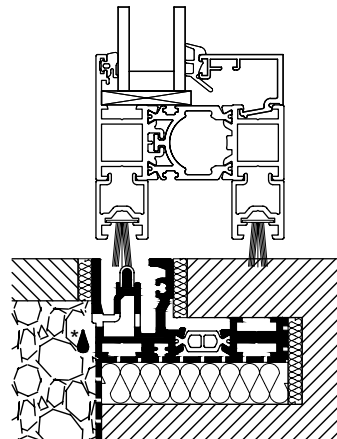
- floor track suitable for living accommodation
- for wheelchair access with 14 mm upstand



- floor track suitable for living accommodation
- for wheelchair access with 14 mm upstand



- mini floor track (29 mm wide)
- for wheelchair access with 14 mm upstand



- mini floor track (29 mm wide)
- for wheelchair access with level threshold

BI-FOLDING DOORS

ECOLINE | HIGHLINE

System Features

PROFILE SYSTEM

- Highly thermally insulated modular aluminium profile system available in two unit thicknesses:
- 67 mm Ecoline and 84 mm Highline
- Floor mounted. Therefore little load bearing capacity of lintel required
- Angular profile design
- Minimum sight lines of 99 mm at the panel joints
- "bionicTURTLE®", a GFR Polyamid single piece, multi-functional thermal break profile
- Loose shear bond in insulating web compensating for thermal loads
- Controlled drainage
- Runner and guide tracks integrated into the system
- Separate levels for runners and locking
- Floor tracks (for wheelchair access and living accommodation) available
- Concealed cable routing can be integrated

SEALING SYSTEM

- Sealing by two wrap-around lines of defence with constant gap size and even sealing pressure between panels
- Sealing faces are not broken by door furniture
- Skinned foam seals with excellent sliding properties
- Air infiltration barrier seal for enhanced U values as option
- Up to three lines of defence against ingress possible

CONFIGURATION OPTIONS

- Panels are inward or outward folding and can be designed to slide to the right or left
- Floor tracks without upstand to DIN 18040 (for wheelchair access)
- For level thresholds, mini floor tracks are possible
- RC2-/RC2N burglar protection optional
- If folding panel pair is hinged on frame side, tilt and turn panels can be integrated with concealed door
- Folding, tilting, tilt and turn or fixed units can be combined in one single frame with continuous floor track by means of an integrating profile and modular design.
- Single frame installation for mounting of folding system on parapet even with transom windows now

DOOR FURNITURE

- No protruding runner and guide tracks
- Concealed door furniture for one-handed operation
- For increased wind loads additional concealed panel centring facility "TwinX" can be integrated
- System hinges for increased panel weights available
- Integrated system adjustment in subframe rebate

outside sealing face

- Optimised design of the stainless steel runner track together with the hourglass-shaped runners allow for an unguided runner assembly
- Quiet runner mechanisms with extremely long life stainless steel ball bearings and bearing surfaces
- Easy, smooth and wear-resistant runner assemblies with double row deep groove ball bearings and integrated anti-prying guard
- High-grade stainless steel Solarlux designer handles
- Lockable one-hand-operation by means of special gearing with 24 mm throw
- Entry/exit panel can be supplied with lever-handle-operated multi-point locking system and profile cylinder lock
- Captive hinge pins
- "Easy Clean" removable hinge pins with convenient release mechanism and operating error prevention device for cleaning the outside of panels which open to the inside of folding glass door units.
- Specific locking points at spaced intervals allow the use of the removable hinge pin on paired as well as non-paired folding glass doors
- Lock monitoring by means of Reed contacts and concealed cabling
- Patented "Comfort Snap" panel catches with specified locking sequence
- Installation of the subframe profiles and the floor track on load-transferring plates with centering grooves and sealing cushions is optional
- Additional covering of the fixing screws in the frame rebate








ENVIRONMENT

- Sustainable manufacturing
- Certified waste disposal to DIN EN ISO 14001: 2009

MANUFACTURING FACILITY








- Internal production inspection
- Tested to DIN EN 1090 execution class EXEC1 and EXEC2
- Certified to DIN EN ISO 9001

Ecoline Features

	Resistance to wind load to DIN EN 12210	B4
	Protection against driving rain to DIN EN 12208	8A
	Air permeability to DIN EN 12207	3
	Mechanical durability to DIN EN 1191/12400	2
	Burglar resistance to DIN EN 1627-1630	RC2/RC2N
	Sound insulation class to DIN EN ISO 140-1	R_w up to 40 dB
	Thermal performance of windows, doors and shutters to DIN EN ISO 10077-1	U_w ± 1,1 W/m²K

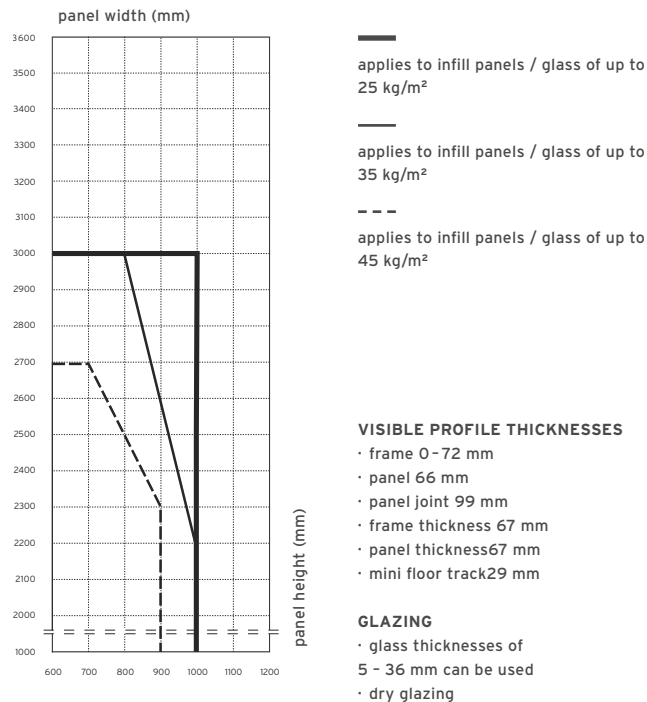
Note: Details depend on version and glass

Highline Features

	Resistance to wind load to DIN EN 12210	B4
	Protection against driving rain to DIN en12208	9A
	Air permeability to DIN EN 12207	3
	Mechanical durability to DIN EN 1191/12400	2
	Burglar resistance to DIN EN 1627-1630	RC2/RC2N
	Sound insulation class to DIN EN ISO 140-1	R_w up to 45 dB
	Thermal performance of windows, doors and shutters to DIN EN ISO 10077-1	U_w ± 0,8 W/m²K

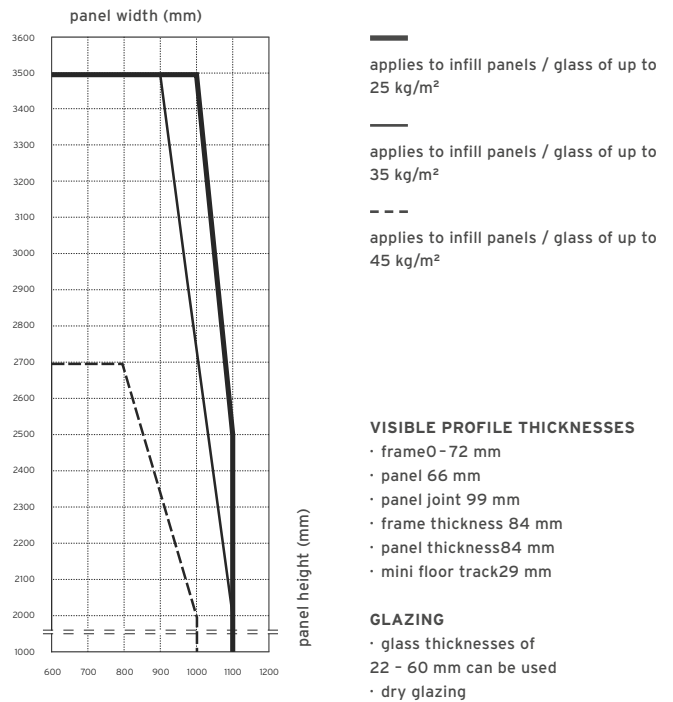
Note: Details depend on version and glass

Ecoline Panel Sizes



- Note:
- Dimensions include frame portion
 - Recommend horizontal division bars for system heights ± 2550 mm
 - Max. panel weight 90 kg
 - Min. panel width 700 mm for paired versions
 - Max. installation height for systems with opening panel 2700 mm
 - Wind and impact loads may limit the panel size
 - Special sizes on request

Highline Panel Sizes



- Note:
- Dimensions include frame portion
 - Recommend horizontal division bars for system heights ± 2550 mm
 - Max. panel weight 110 kg
 - Min. panel width 900 mm for paired versions
 - Max. installation height for systems with opening panel 2700 mm
 - Wind and impact loads may limit the panel size
 - Special sizes on request

